

Freshers Fair Quiet Hours:
Wednesday 4pm-5pm
Thursday 9am-10am

To access the
Commercial
Marquee, we advise
exiting onto the High
Street and re-
entering via Merton
Street

**GROUND
FLOOR**



**HIGH STREET
ENTRANCE/EXIT**

Request Portable Hearing Loops/Sunflower
Lanyard/Printed Maps at Entrance

WATER
REFILL



HEARING
LOOP



ACCESSIBLE
ENTRANCE



PORTER'S LODGE/
RECEPTION



INFORMATION



RAMP



STAIRS



LIFT



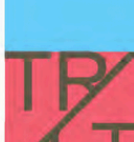
STAIR LIFT



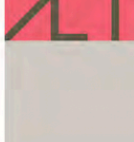
DISABLED
WC



STANDARD
WC



TEACHING
ROOM/
LECTURE THEATRE



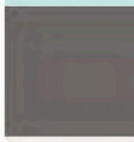
LIBRARY



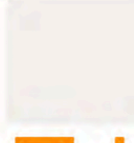
COMMON
ROOM



SHOP



OFFICE/
ANCILLARY
SPACE



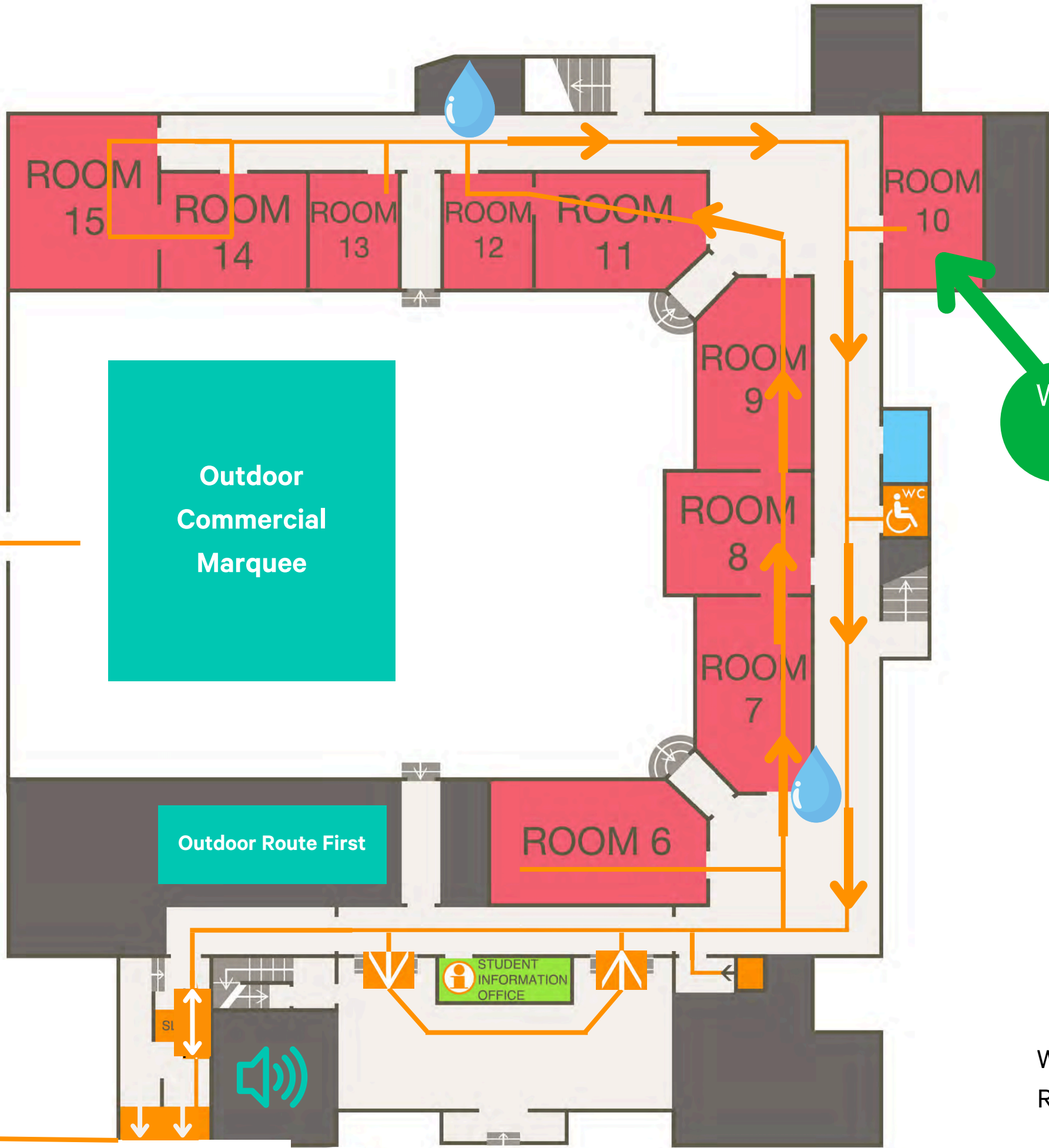
CORRIDOR/
HALL



LEVEL
ACCESS
ROUTE



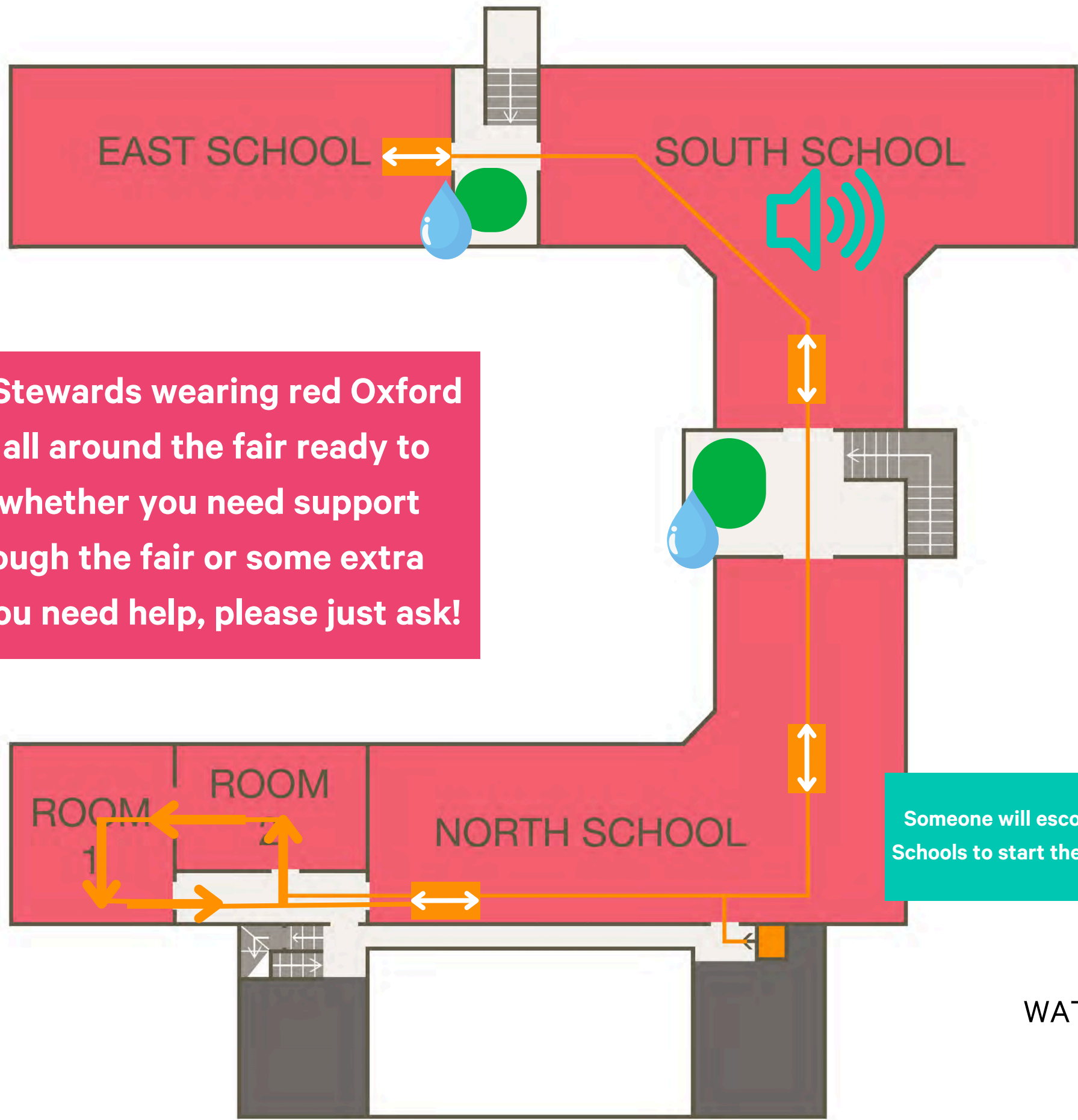
PARKING



**1ST FLOOR
ROUTE BEGINS
HERE**

There will be Stewards wearing red Oxford SU T-Shirts all around the fair ready to assist you, whether you need support moving through the fair or some extra guidance. If you need help, please just ask!

1ST FLOOR



- ACCESSIBLE ENTRANCE
- PORTER'S LODGE/RECEPTION
- INFORMATION
- RAMP
- STAIRS
- LIFT
- STAIR LIFT
- DISABLED WC
- STANDARD WC
- TEACHING ROOM/LECTURE THEATRE
- LIBRARY
- COMMON ROOM
- SHOP
- OFFICE/ANCILLARY SPACE
- CORRIDOR/HALL
- LEVEL ACCESS ROUTE
- PARKING

WATER REFILL



REFUGE POINTS

