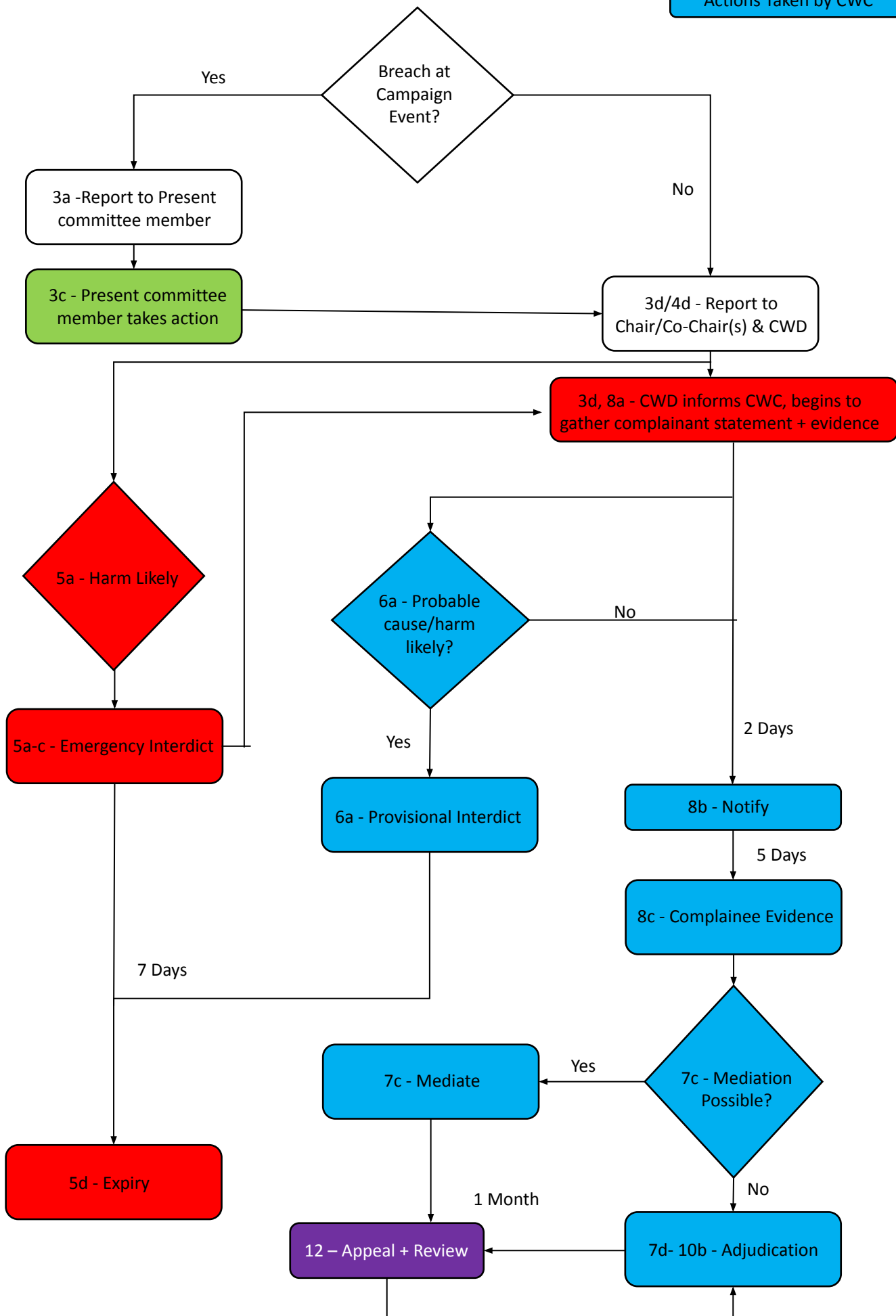


Simplified Flowchart of the Campaign's Complaint Procedure.

If either party is a CWD, Co-Chair or VP for Welfare, they are removed from the decision-making process. Anonymous complaints also operate slightly differently.

Actions Taken by Chair/CWD
Actions Taken by CWC

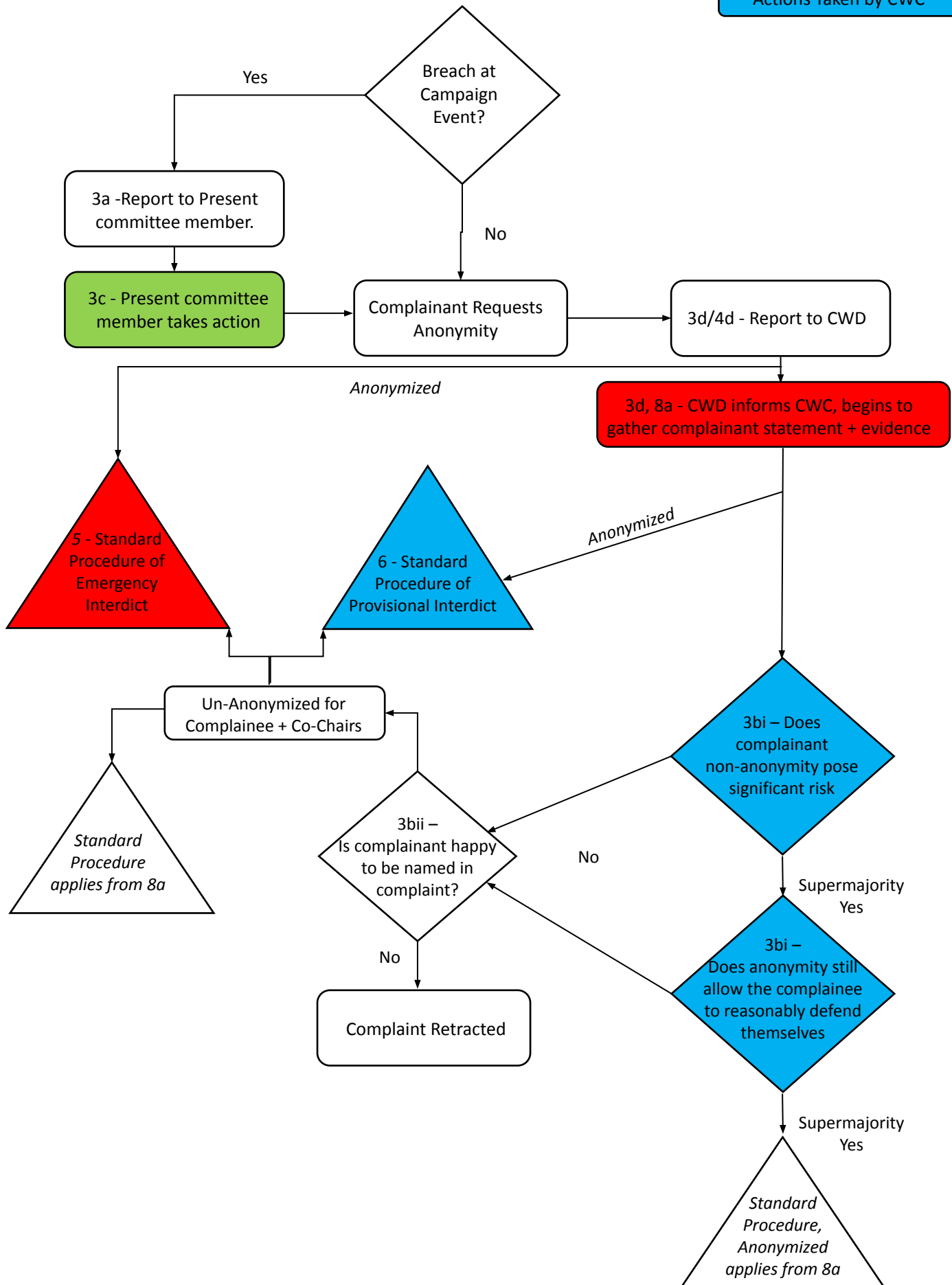


Simplified Flowchart of the Anonymous Campaign Complaint Procedure.

If either party is a CWD, Co-Chair or VP for Welfare, they are removed from the decision-making process.

Actions Taken by CWD

Actions Taken by CWC



Simplified Flowchart for the Formation of the CWC

